

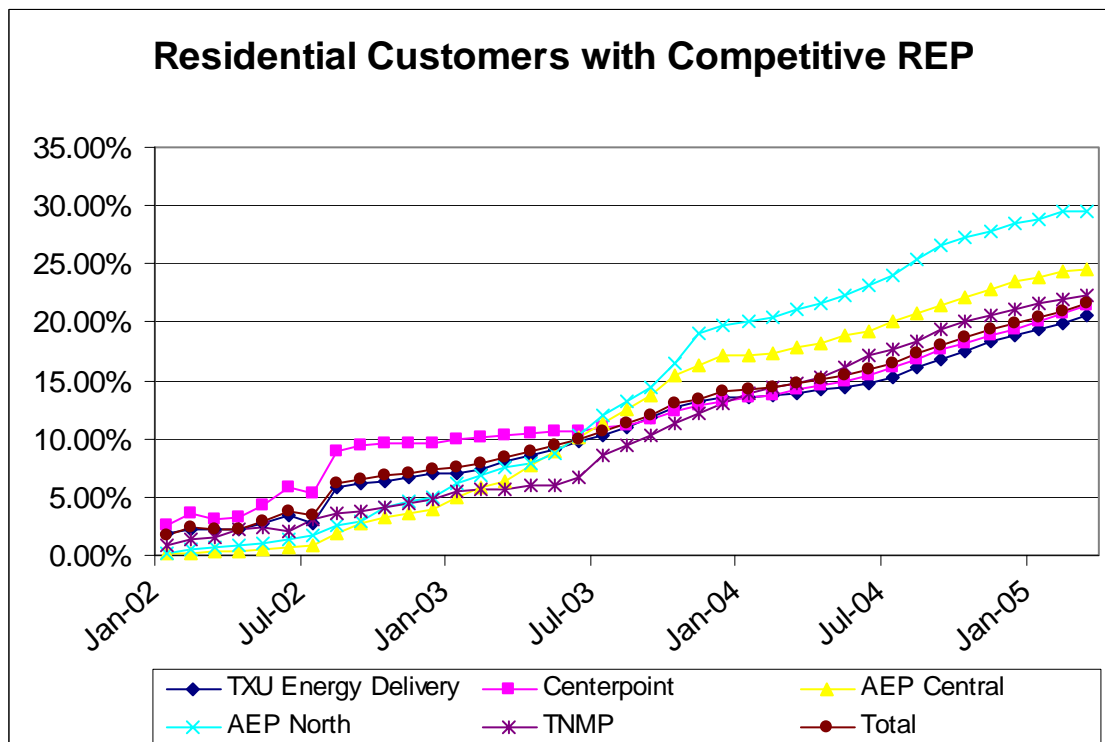
## June 2005 Report Card on Retail Competition

### Competitive Marketplace

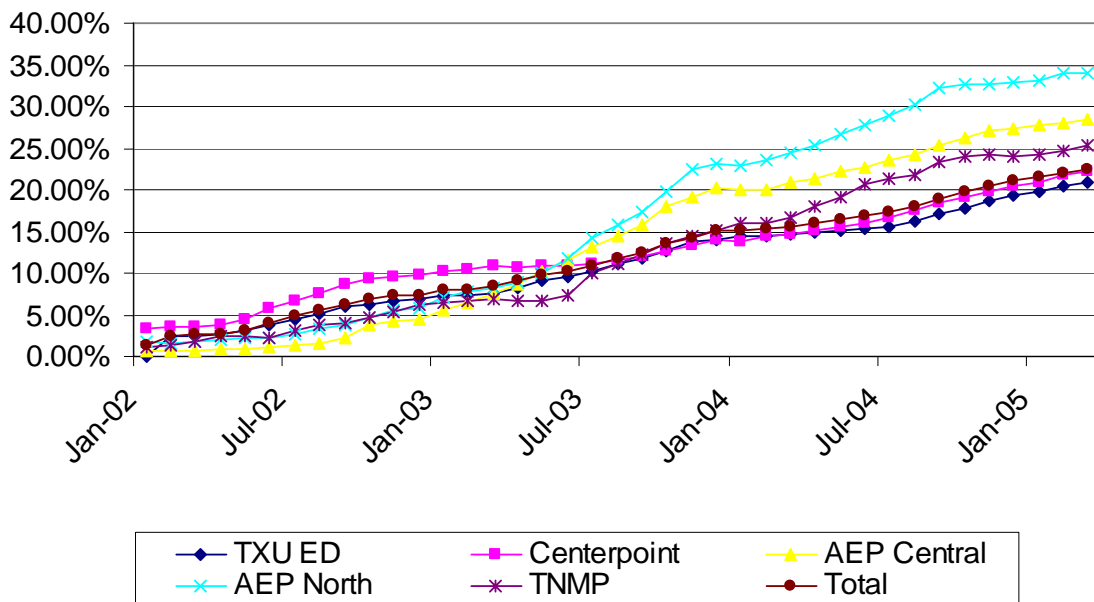
Since the opening of the market in January 2002, competitive market share has steadily increased. As of March 2005, competitive REPs accounted for approximately 21.6% of residential customers, representing over 22.5% of residential load. Among customers served at secondary voltage, consisting of most commercial and some small industrial customers, over 28.9% of customers representing 59.64% of all load have switched to competitive providers.

Approximately 51% of primary or transmission customers have switched, representing over 65% of the large industrial load. Competition has also appeared in the lighting segment of the market, with about 24% of total lighting load having switched.

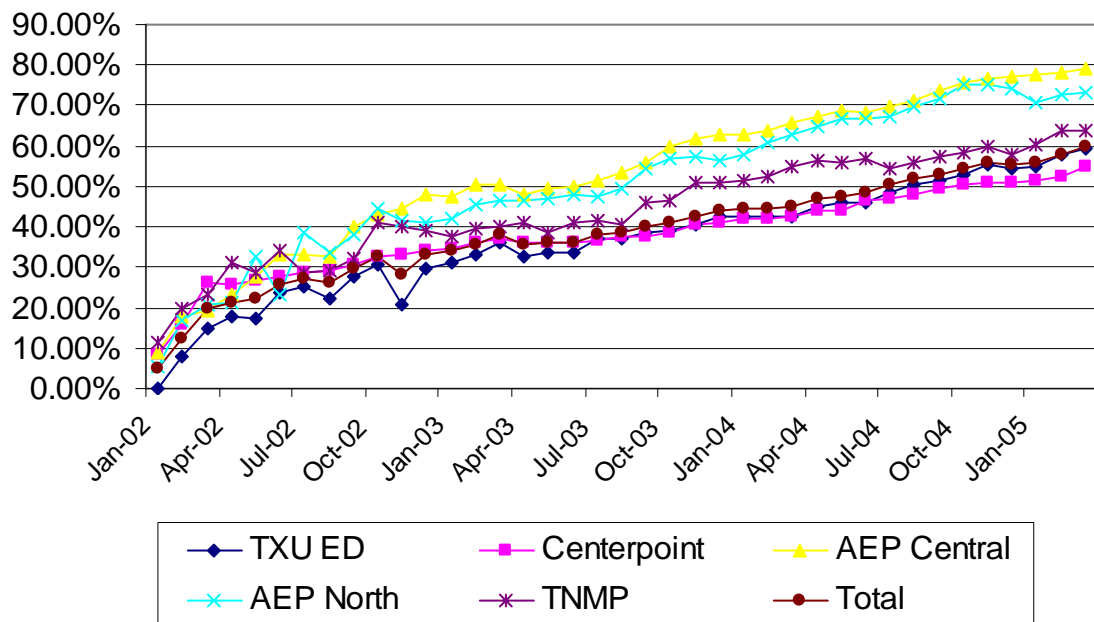
The AEP Central (CPL) and AEP North (WTU) territories have seen the most switching to competitive providers, but all 5 major territories are seeing a steady rise in competitive providers' market shares. The affiliate market share ranged from 50.01% of MWHs sold in Centerpoint to 71.23% in AEP Central.



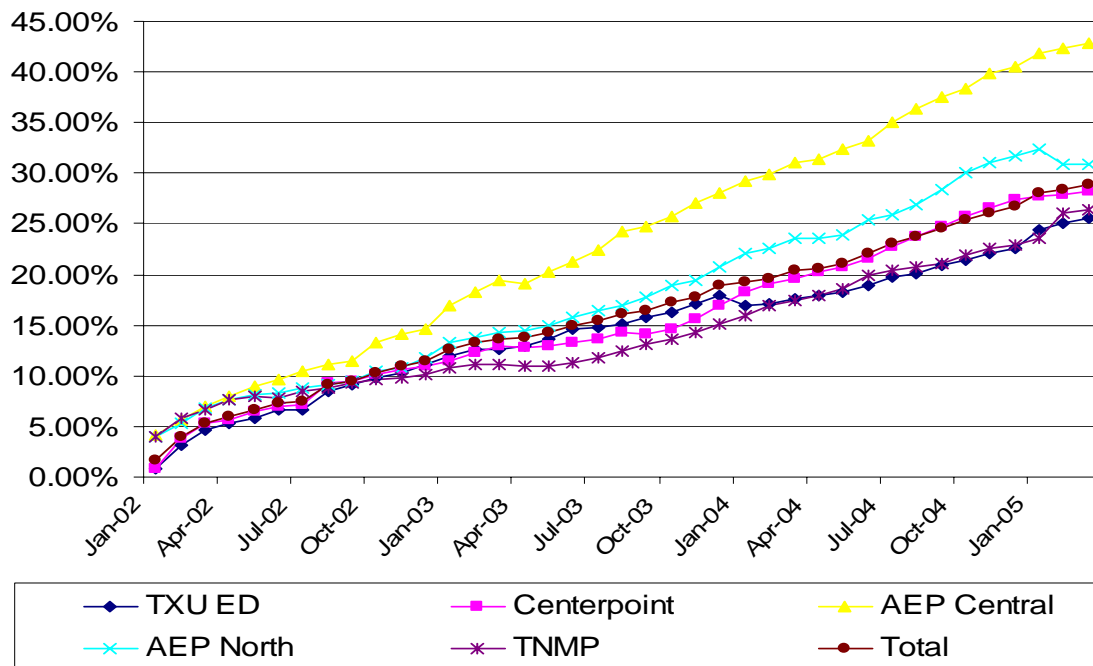
### Residential Megawatt-hours switched to Competitive REP



### Non-AREP Share of Secondary Voltage Megawatt-hours



## Secondary Voltage Customers with Competitive REP



## System Benefit Fund

T&D Service Area	# of Customers receiving discount	\$ of Discounts Disbursed in April 2005
TXU ED	149,284	\$1,137,000
CenterPoint	94,636	\$785,000
CPL	107,387	\$948,000
TNMP	10,934	\$85,000
WTU	14,044	\$112,000
Sharyland	18	\$200
April Total	350,143	\$3.068 million
Total Discounts in 2004		\$52.268 million
2005 Total YTD		\$14.096 million

## Switching

Since competition opened, 1.92 million customer switches have been completed. Activity continues to be brisk, with 300,000 completed in the first six months of 2005. The market should see its 2 millionth completed switch sometime this summer.

Total Switches as of June 24, 2005				
TDSP	Completed	In Review	Scheduled	Total
TXU ED	895,909	793	34,382	931,084
CenterPoint	601,136	423	22,757	624,316
AEP Central (CPL)	297,756	321	7,558	305,635
TNMP	49,503	3	1,942	51,448
AEP North (WTU)	77,597	44	2,322	79,963
Sharyland	250	0	2	252
SESCO	1	0	0	1
<b>TOTAL</b>	<b>1,922,152</b>	<b>1,584</b>	<b>68,963</b>	<b>1,992,699</b>

## Competitive Choice

All regions continue to have competitive choices available, with at least one renewable product available in each region. Most areas have renewable products from multiple providers. In recent months, Reliant Energy and Gexa Energy have started offering renewable products in some territories.

<b>TDSP</b>	<b># of REPs serving Residential Customers (incl. AREP)</b>	<b># of Residential products (incl. PTB)</b>	<b># of Renewable Products</b>
<b>TXU ED</b>	13	21	5
<b>CenterPoint</b>	12	19	5
<b>AEP Central (CPL)</b>	13	19	5
<b>TNMP</b>	11	17	5
<b>AEP North (WTU)</b>	9	13	1